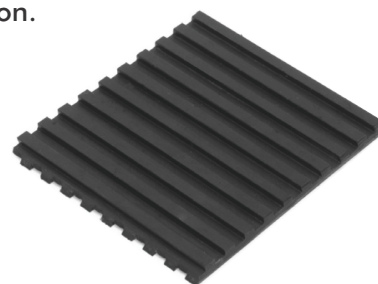


Specifications

- Alternate High/Low Ribbed Construction.
- Easy to Cut Pads can be cut to be slightly larger than the size of the leg or machine, using shears or knife.
- Easy Field Installation
- Multiple layers of Ribbed Mounting Pad can be used to increase deflection.

Model No.	Size Inches	Load (LBS)	Load (Kg)
EFRMP381818	3/8" x 18" x 18"	12960	5878
EFRMP381212	3/8" x 12" x 12"	5760	2612
EFRMP380808	3/8" x 8" x 8"	2560	1161
EFRMP380606	3/8" x 6" x 6"	1440	653
EFRMP380404	3/8" x 4" x 4"	640	290
EFRMP380303	3/8" x 3" x 3"	360	163

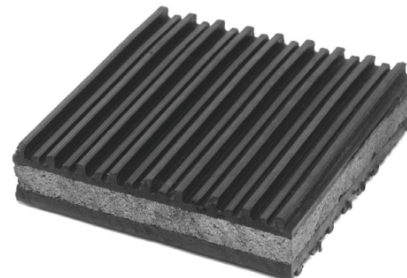


Ribbed Mounting Pads

Specifications

- Cork sandwich Pads are laminated pads having 1/2" thick close grained cork securely bonded between two layers of 1/4" alternate low high ribbed Neoprene rubber pads.
- Offers highest level of sound attenuation and vibration isolation.
- No need for bolting.

Model No.	Size Inches	Load (LBS)	Load (Kg)
EFCS781818	7/8" x 18" x 18"	16200	7348
EFCS781212	7/8" x 12" x 12"	7200	3265
EFCS780808	7/8" x 8" x 8"	3200	1451
EFCS780606	7/8" x 6" x 6"	1000	454
EFCS780404	7/8" x 4" x 4"	860	390
EFCS780303	7/8" x 3" x 3"	450	204

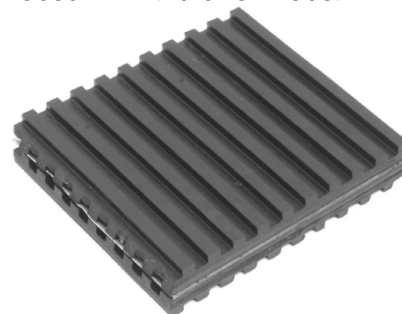


Cork Sandwich Pads

Specifications

- Metal Sandwich Pads are constructed of a steel plate bonded between Ribbed Anti Vibration Pads.
- Designed for very high load capacity.

Model No.	Size Inches	Load (LBS)	Load (Kg)
EFMSP011818	1" x 18" x 18"	32400	14696
EFMSP011212	1" x 12" x 12"	14400	6531
EFMSP010808	1" x 8" x 8"	6400	2902
EFMSP340606	3/4" x 6" x 6"	3600	1632
EFMSP340404	3/4" x 4" x 4"	1600	725
EFMSP340303	3/4" x 3" x 3"	900	408



Metal Sandwich Pads

- Due to policy of continual improvement, the specifications are subject to change without prior notice.
- Measurements are subject to 5% tolerance.
- To achieve good sound suppression do not over load fitting.